

Designed for the elite



Lavish 2 & 3 BHK Apartments



Located in the heart of the city at a pristine and elite locale, Arc Maestro is a project that promises to be a cut above the rest. Daily amenities, the best of School and Colleges, Sporting facilities, Shopping Malls, State of the art Hospitals are located in the immediate vicinity.

A Vantage Location

Apte Road is home to the who's who of Pune. Having a home here will give your family the advantage of a well educated, cultured and sophisticated neighborhood. At Arc Maestro, an elegant and imposing elevation is complemented by well planned interiors.



A decorative border of white floral and vine motifs surrounds the central text. The design features intricate, swirling vines with leaves and small flowers, creating a delicate and elegant frame. The background is a solid light blue color.

A Statement of Contemporary Living

Arc Maestro has the markings of Pune's most coveted address. It is a project that embraces a modern lifestyle. It is a new way to experience cosmopolitan living together with a sense of calm.

Here spacious interiors host a cosy ambience. Excellent cross ventilation allows for maximum natural light. The homes open to a view of verdant green areas inviting positive energy and peace of mind.

If you are looking for a well connected, up market and state of the art complex with every thing at stones throw, literally then Arc Maestro is your answer!





A Promise of Joyful Moments

Arc Maestro is well suited for vivacious living. With recreation facilities at a close distance, the resident gets enough time for sports and leisure.

At the same time the thoughtfully planned complex is an ideal enclave for peace and privacy. The salubrious surroundings of this locale compliment the same. Arc Maestro promises to be a nest where your little ones will be nurtured with care and comfort and their talents and potential will flower to the fullest.

For the home maker of your family you have a kitchen area that is designed for efficiency and ease. Need we say more....

Arc Maestro is all about joyous moments.



RCC

- RCC framed earthquake resistant structure
- Elasticity in planning of walls as per your choice

PAINT

- Superior weather coat paint from outside (Apex equivalent)
- Superior wall finish with lustre paint from inside

ELECTRICAL

- Concealed copper wiring with main circuit breakers
- TV cable points in all rooms
- A/C points in all bedrooms
- Premium quality modular switches (Legrand equivalent)
- Power backup for common area and lift
- Provision for inverter

LIFT

- Fully automatic lift with power backup

OTHERS

- Solar Panel
- Piped Gas
- Well designed entrance, lobby & common parking area
- Video door phone

FLOORING

- Italian/Imported marble in living, dining, lobby and passage area
- Wooden flooring in master bedroom
- 2' x 2' Vitrified flooring in other bedrooms
- Anti-skid designer tiles in toilets and terraces

DOORS/WINDOWS

- Decorative main entrance door
- U-PVC windows (soundproof) with mosquito net
- Granite window frames

KITCHEN

- Modular kitchen with chimney, granite platform and stainless steel sink
- Designer glazed dado tiles up to ceiling above the platform

TOILETS

- Designer glazed dado tiles on walls up to ceiling
- Concealed plumbing with premium quality C.P. fittings (Grohe equivalent)
- Wall hung European water closet (commode) in all toilets (Duravit equivalent)
- Granite frames
- Provisions for geyser and exhaust fan

Project Highlights





2 BHK Apartment

LEGEND

- A** ENTRANCE
- B** LIVING ROOM
- C** DINNING AREA
- D** KITCHEN
- E** M. BEDROOM
- F** M. BATHROOM
- G** BEDROOM
- H** BATHROOM
- I** DRY TERRACE
- J** TERRACE

3 BHK
Apartment

LEGEND

- A** ENTRANCE
- B** LIVING ROOM
- C** DINNING AREA
- D** KITCHEN
- E** M. BEDROOM
- F** M. BATHROOM
- G** BEDROOM
- H** BATHROOM
- I** DRY TERRACE
- J** TERRACE

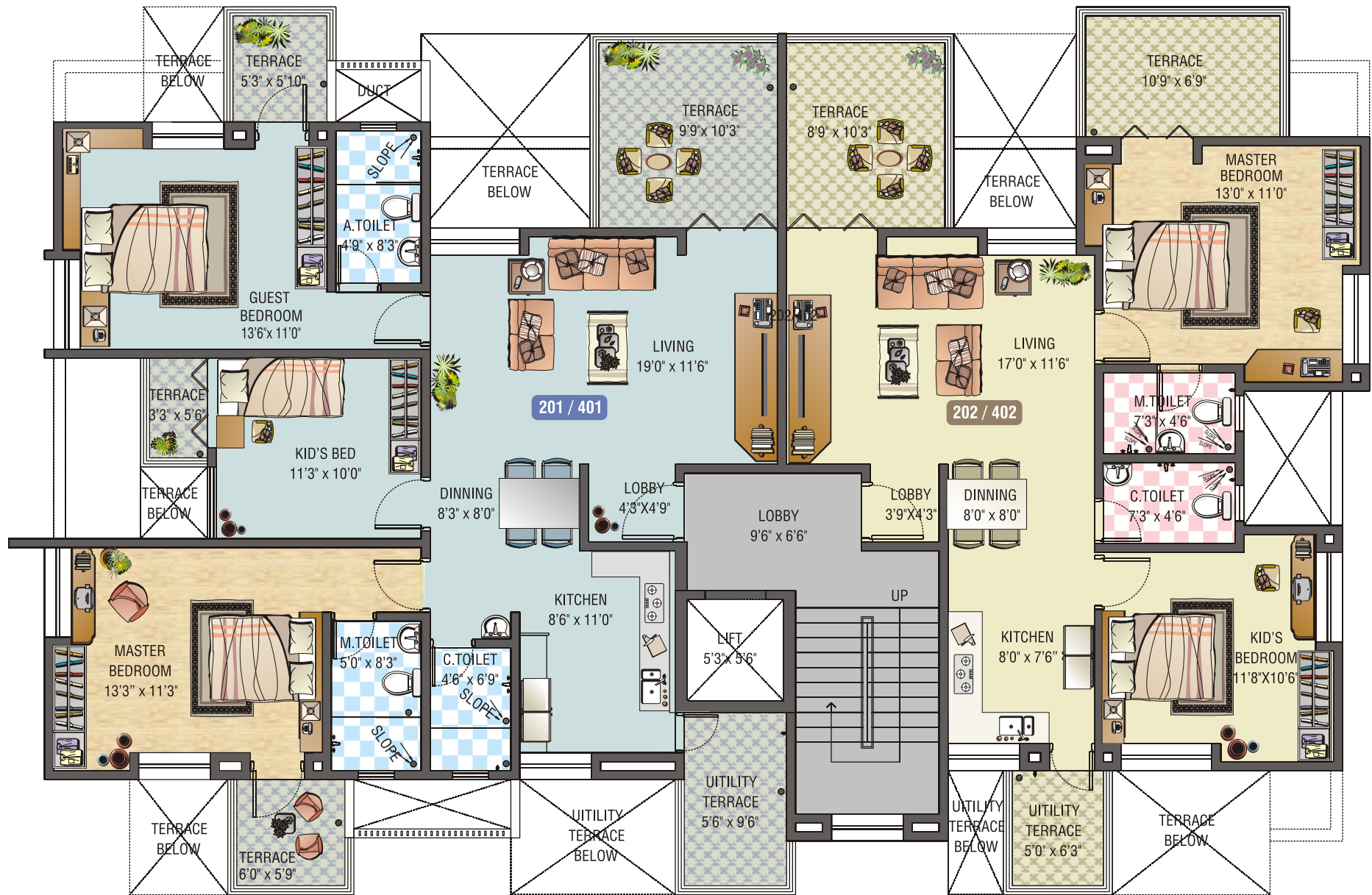


TYPICAL 1ST & 3RD FLOOR PLAN



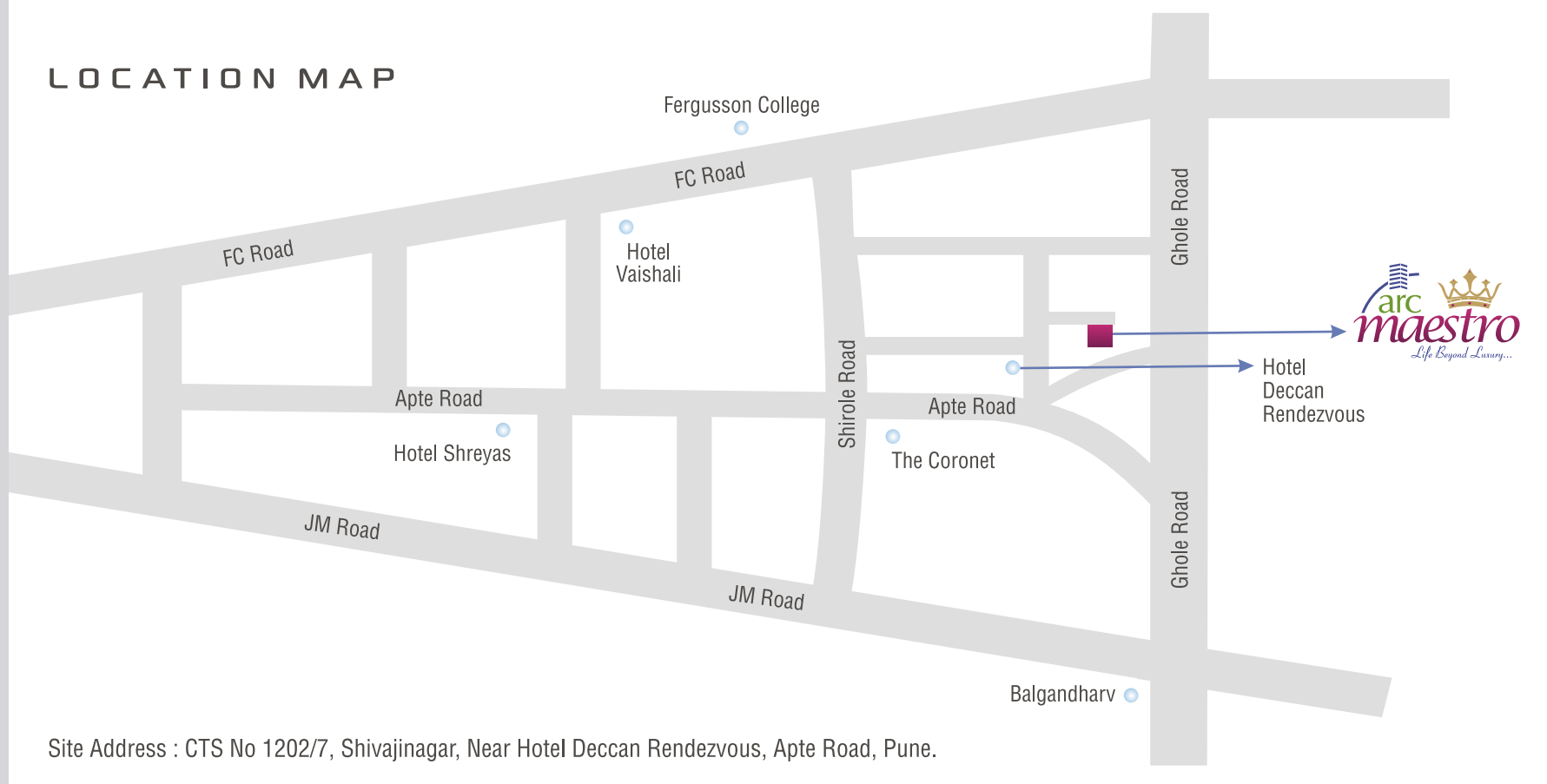
FLAT NO.	TYPE	CARPET AREA	TERRACE AREA	SALABLE AREA-1ST FLOOR
101 / 301	3 BHK	1047	222	1649
102 / 302	2 BHK	764	173	1218

TYPICAL 2ND & 4TH FLOOR PLAN



FLAT NO.	TYPE	CARPET AREA	TERRACE AREA	SALABLE AREA-2ND FLOOR
201 / 401	3 BHK	1046	235	1665
202 / 402	2 BHK	764	191	1241

LOCATION MAP



CREDITS

Architect
Sachin Solanki

RCC Consultant
G.A. Bhilare Consultants

Legal Advisor
Wadia Ghandy & Co. (Pune)

ONGOING PROJECTS



2, 3 BHK Apartments
@
Undri, Pisoli



2, 3 BHK Apartments
& Shops @
Keshavnagar, Mundhwa



2 BHK Apartments
& Row Houses @
Bawdhan



2, 3 BHK Apartments
& Shops @
Handewadi Road, Hadapsar



A Project By



Agrawal Raka Construction

3, Amarpark Apts, Shirole Road, Off. J.M. Road, Pune 411 004.

Email: maestro@arcpune.com Website: www.arcpune.com

For Enquiry Call: 83904 97100

Member
CREDAI
PUNE METRO